



WALKER AND ASSOCIATES INC

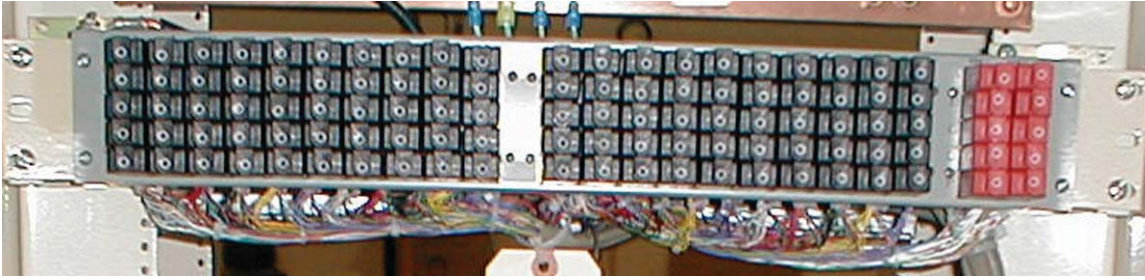


Open the Door to Cost-Effective DSLAM Solutions

Custom engineered, fully assembled, professionally tested integrated DSLAM solutions featuring components from industry leading manufacturers. We know networks. We know manufacturers. We know how to save you money. Integrated solutions take your services to market quicker, increasing customer satisfaction and driving increased profits. Walker is more than distribution. We are Distribution Done RIGHT!



Quality Workmanship



Walker and Associates' highly skilled technicians thrive on perfectionism to ensure your equipment gets the best in assembly, testing, and packaging available in the business.

- Equipment is carefully mounted and cabled
- Walker performs testing that simulates network operation
- Walker performs visual inspections in adherence to industry standards
- Walker works to ensure that each configuration is integrated, manufactured, and tested exactly alike
- Walker configures software for customer applications
- Walker provides high-quality packaging to ensure the product arrives damage free



Experience

Your telecommunications equipment needs are unique. You need someone who understands your needs and who can provide you workable solutions. Walker and Associates empowers you to do this and more with knowledgeable engineering support.

- Walker is a consultant on the feasibility of the network design
- Enhances existing customer engineering team
- Network design and rack layout
- Walker will ensure the product exceeds your network specifications
- Expertise ranging from SONET to termination equipment

WALKER SERVICES

Distribution
Custom Kitting
Custom Cable Assemblies
Integration
EF&I
Engineering Support
Applied Inventory Management
Electronic Commerce
Project Management
Asset Recovery

Corporate Headquarters

7129 Old Highway 52 N
Welcome, NC 27374

Distribution Center

90 Piedmont Industrial Drive
Suite 200
Winston-Salem, NC 27107

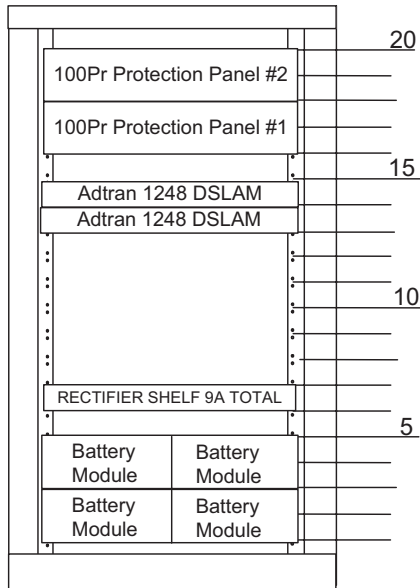
800.WALKER1 Phone
336.731.6391 Phone
336.731.3089 Fax

info@walkerfirst.com
www.walkerfirst.com





Hendry 08027 Cabinet, 42" H x 28.5" W x 24" D
e/w Two Adtran 1248 DSLAMs, Power and Protection



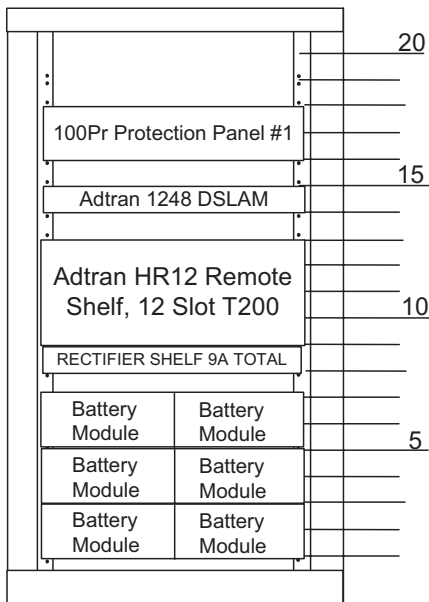
Bill of Material		
Part Number	Qty	Description
08027-135G+87	1	TELECT/HENDRY OSP CABINET, 42" HIGH, 24" DEEP, 28.5" WIDE, 20 RMU
08027-P05+87	1	CABINET POLE MOUNT KIT
1179641L1	2	ADTRAN TOTAL ACCESS 1248, 48 PORT MINI-DSLAM, 4XT1 IMA
URS	1	NEWMAR RECTIFIER SHELF, 3 POSITION
UR48-3	3	NEWMAR RECTIFIER MODULE, -48VDC, 3 A
UFP-5	1	NEWMAR 5 POSITION GMT FUSE MODULE
BMS-19/23	2	NEWMAR BATTERY SHELF, 2 POSITION
BM-48-4	4	NEWMAR BATTERY, 48VDC, 4AMP
25A-FAFA-0005	8	WALKER CABLE, 25PR, 24AWG, FEMALE TO FEMALE, 5FT
F000748	2	EMERSON POWER 100 PR POTS PROTECTION PANEL, 10 PR T1 WITH PROTECTORS
LABOR	40	ASSEMBLY, HANDLING, WIRING
MISCELLANEOUS MAT.	20	POWER WIRE, PACKAGING



Issue	Engineer	Date
1	RAW	3/09/05



Hendry 08027 Cabinet, 42" H x 28.5" W x 24" D
e/w One Adtran 1248 DSLAMs, Power,
Protection & HDSL2

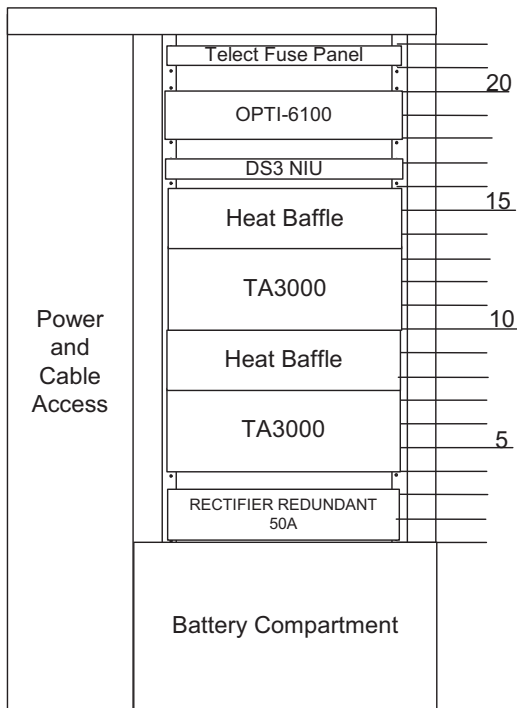


Bill of Material		
Part Number	Qty	Description
08027-135E+87	1	TELECT/HENDRY OSP CABINET, 42" HIGH, 24" DEEP, 28.5" WIDE, 20 RMU
08027-P05+87	1	CABINET POLE MOUNT KIT
1179641L1	1	ADTRAN TOTAL ACCESS 1248, 48 PORT MINI-DSLAM, 4XT1 IMA
URS	1	NEWMAR RECTIFIER SHELF, 3 POSITION
UR48-3	3	NEWMAR RECTIFIER MODULE, -48VDC, 3 A
UFP-5	1	NEWMAR 5 POSITON GMT FUSE MODULE
BMS-19/23	3	NEWMAR BATTERY SHELF, 2 POSITION
BM-48-4	6	NEWMAR BATTERY, 48VDC, 4A-H
1242007L1	1	ADTRAN HR12 SHELF, 12 SLOT TYPE 400/200 SHELF
1223024L2	4	ADTRAN T200 H2TU-R
MPP-CXFBA1-S	1	ADC T1 PATCH PANEL, 24 PORT
25A-FAFA-0005	8	WALKER CABLE, 25PR, 24AWG, FEMALE TO FEMALE, 5FT
2-F4GA1A2-A8T1	2	WALKER CABLE, 25PR, 24AWG, 50 PIN MALE TO 50 PIN FEMALE TSD, T1, 5FT
F000748	1	EMERSON POWER 100 PR POTS PROTECTION PANEL, 10 PR T1 WITH PROTECTORS
LABOR	50	ASSEMBLY, HANDLING, WIRING
MISCELLANEOUS MAT.	20	POWER WIRE, PACKAGING

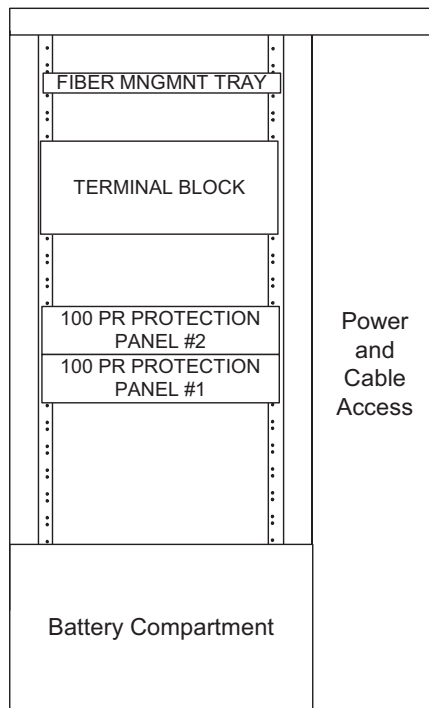


Issue	Engineer	Date
1	RAW	5/9/05

MESA BRIDGE Cabinet, 60" H x 44" W x 28" D



FRONT VIEW



REAR VIEW



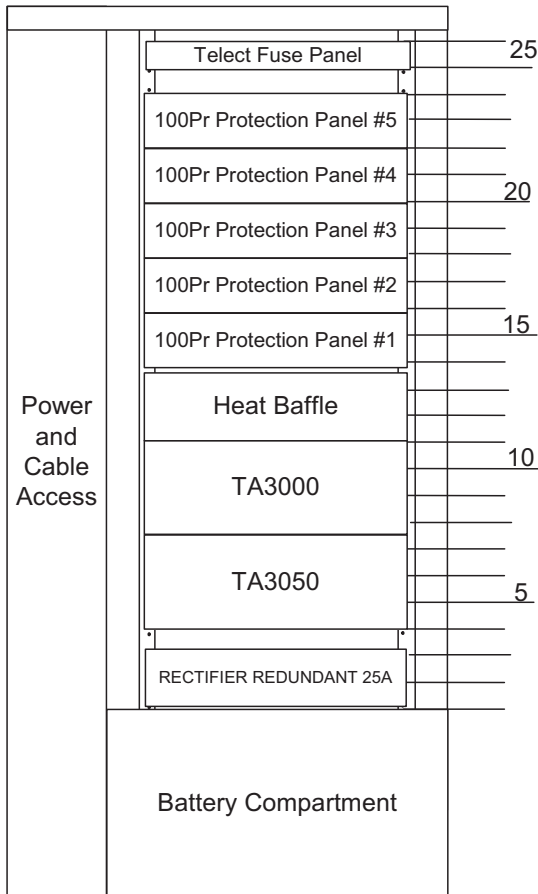
Bill of Material		
Part Number	Qty	Description
		MESA BRIDGE CABINET E/W AC LOAD CENTER, LXP125 RECTIFIER SYSTEM, 200 PR PROTECTION, BATTERY CHAMBER
20160566C1	1	
1212073L1	1	ADTRAN NIU-3 SHELF, 3 POSITION
1184501L1	1	ADTRAN OPTI-6100 CHASSIS
1181001L1	2	ADTRAN TA3000 CHASSIS
4181001L1	2	ADTRAN TA3000 HEAT BAFFLE
1181971L1	2	ADTRAN TA3000 FILTER HOUSING
		TELECT FUSE PANEL, 4 GMT AND 4 KLM POSITIONS PER SIDE, 100 AMP INPUT PER SIDE
009-8004-0104	1	
118440	4	TELECT FUSE, KLM, 20 AMP
		ADC FIBER MANAGEMENT PANEL, 12 TERMINATIONS, SC ADAPTORS
FMT-DTL070U21-K12P	1	
		TELECT TERMINAL BLOCK PANEL, TWO 256 PR BLOCKS W/64 PIN CONNECTORS
TCCS-49-1	2	
		WALKER CABLE, 32PR, 24AWG, FEMALE 64PIN TO FEMALE 64 PIN, 10FT
32M-FDFD-0010	4	
		WALKER CABLE, 73501, BNC TO BNC, 10FT
735-01ABB-010	10	
FPC2-SPSC-3M	2	ADC FIBER PATCHCORD, 3M, DUAL
LABOR	50	ASSEMBLY, HANDLING, WIRING
MISCELLANEOUS MAT.	20	POWER WIRE, PACKAGING



Issue	Engineer	Date
1	RAW	9/15/04



DEC33 Cabinet, 62.5" H x 33" W x 25" D



Bill of Material		
Part Number	Qty	Description
		Emerson DEC33 CABINET, 62.5"H X 33"W X 25"D, E/W BATTERY TRAY, AC LOAD CENTER, 25AMP REDUNDANT DC POWER SYSTEM, 500 PR PROTECTION
F787659CC566	1	
1181001L1	1	ADTRAN TA3000 CHASSIS
4181001L1	1	ADTRAN TA3000 HEAT BAFFLE
1181971L1	1	ADTRAN TA3000 FILTER HOUSING
1183001L1	1	ADTRAN TA3050 SPLITTER SHELF
		TELECT FUSE PANEL, 4 GMT AND 4 KLM POSITIONS PER SIDE, 100 AMP INPUT PER SIDE
009-8004-0104	1	
118440	2	TELECT FUSE, KLM, 20 AMP
32M-FDFD-0005	8	WALKER CABLE, TA3000 TO TA3050
		WALKER CABLE, 25PR, 24AWG, FEMALE TO FEMALE, 7FT
25A-FAFA-0007	20	
LABOR	38	ASSEMBLY, HANDLING, WIRING
MISCELLANEOUS MAT.	15	POWER WIRE, PACKAGING



Issue	Engineer	Date
1	RAW	9/15/04