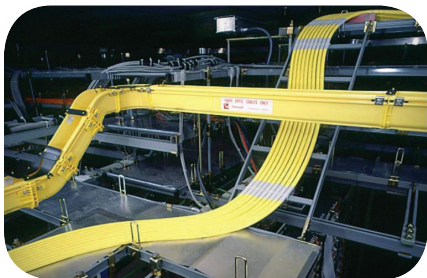


BUILDING THE RAPID NETWORK

New Approaches to Fiber Deployment

Service providers today find themselves squeezed between two conflicting pressures. To attract and retain customers, they must invest in the fiber-based network infrastructure essential to support bandwidth-intensive video, data and multimedia applications. At the same time, they must turn-up new services and customers faster than before while also reducing costs.



Cable routing through a ladder racking system in a traditional installation process.

Connectivity Challenges Across the Network

From the central office, head end, data center and mobile switching office to the outside plant, cell site and customer premises, one of the biggest challenges confronting service providers is connecting the optical distribution frame (ODF) and the active equipment. Until now, they had to use either individual patch cords in a fiber raceway system or a multi-fiber intra-facility cable (IFC), with a connectorized breakout on each end, over ladder racking.

Whichever method they use, the process of measuring, ordering and waiting for the cabling to arrive can take weeks. If mistakes are made in the measurement process, the cycle may have to be repeated. The process to install the fiber adds even more time to the overall timeline, not to mention labor to store or lace excess cable.

Advanced Solution for Faster Connectivity

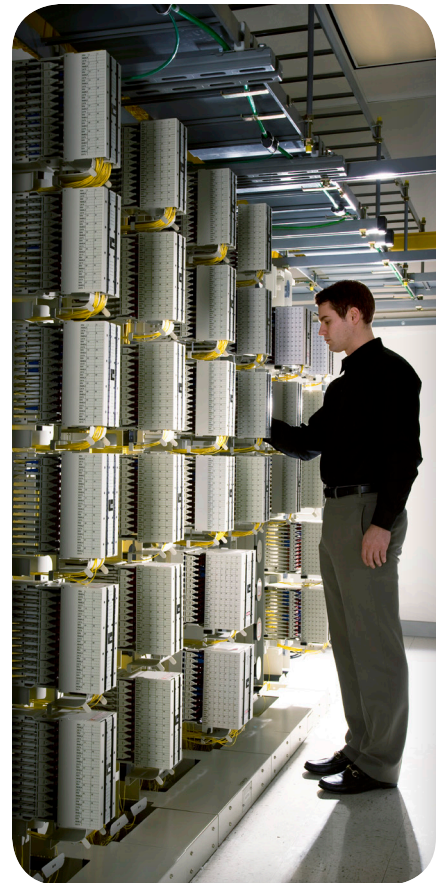
TE Connectivity (TE) now offers the Rapid fiber panel, an innovative connectivity solution designed to tackle these issues. The solution combines TE's industry-leading fiber cable management and MPO connector technology with innovative micro cable technology and the RapidReel™ fiber cable spool to dramatically change how fiber is deployed.

Incorporating the intermediate distribution panel and the micro cable into a single product using the RapidReel™ fiber cable spool, allows installers to pull out just the length of cable required and leave any slack stored on the internal spool. The RapidReel fiber cable spool enables the panel to be ordered in 100' increments up to 1,000' dramatically simplifying product selection and ordering.



The Rapid fiber panel, with its innovative RapidReel fiber cable spool, greatly accelerates fiber installation.

By utilizing the innovative 3 mm diameter 12 fiber micro cable, the Rapid fiber panel can accommodate long lengths of cable in a small amount of space. The micro cables' small size also reduces overhead congestion when replacing single fiber patch cords or multi fiber IFC type cables. The use of an MPO connector to replace 12 single-fiber connectors also reduces installation time and risk by minimizing the number of cables and connectors the technicians have to handle.



The Rapid fiber panels' MPO connector can be connected to properly equipped NGF and LSX optical distribution frames, or FPX panels to rapidly deploy fiber in any environment.

Many Competitive Advantages in a Single Panel

By enabling service providers to install new fiber faster than before and by providing the flexibility to deliver more bandwidth as needed, the Rapid fiber panel reduces the cost of expanding fiber capacity. In fact, when compared with traditional installation methods, the Rapid fiber panel can reduce the total cost per installation by as much as 25 percent. This cost savings, together with the ability to turn-up service faster than ever before, helps service providers attract and retain customers and drive improved profitability.

For more information:
www.te.com/RAPID